

CONSTRUCTION
**PLANT
WORLD**



**MEDIA PACK
2018**



CONSTRUCTION **PLANT WORLD**

ABOUT US

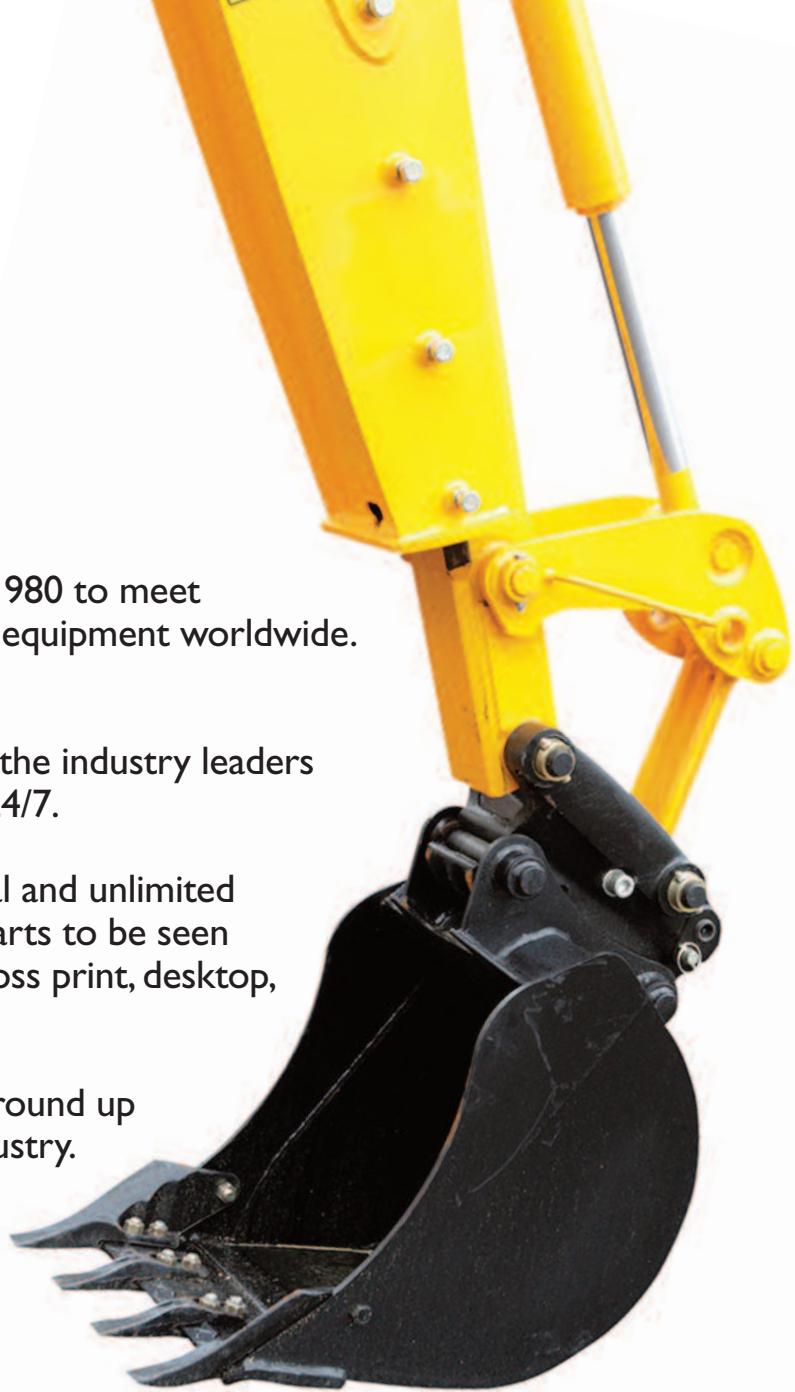
Construction Plant World was launched in 1980 to meet the needs of buyers and sellers of plant and equipment worldwide.

In conjunction with our website, www.ConstructionPlantWorld.com, we are the industry leaders in helping you connect to the marketplace 24/7.

Our unique combination of a printed journal and unlimited website listing enables your machines and parts to be seen by a vast audience of buyers and sellers, across print, desktop, tablet and mobile devices.

We have developed our website from the ground up to make it the easiest to use across our industry.

All our paper advertisers can advertise an unlimited number of machines or parts online **completely free of charge** for the duration of the issue.



CONTACTS

Carole Titmuss - Publisher
C.Titmuss@ConstructionPlantworld.com

Lorraine Compton - Sales Manager
Info@ConstructionPlantworld.com

Advertising
Info@ConstructionPlantworld.com

Subscriptions
Subscriptions@ConstructionPlantworld.com

Construction Plant World is part of Sheen Publishing Ltd,
50 Queens Road, Buckhurst Hill, Essex IG9 5DD, UK
Tel: +44 (0) 208 504 1661

www.ConstructionPlantWorld.com

CONSTRUCTION **PLANT WORLD**

CIRCULATION

With over 35 years experience in the industry, Construction Plant World is published every two weeks and has built up a loyal readership who influence the buying and selling of new and used equipment.

IN PRINT

Construction Plant World reaches a global audience of over 10,000 readers.

Breakdown by Geographical Location

UK/Europe	6356
Americas	787
Africa	1251
Far East	205
Middle East	993
Asia	1304

(Inc India/Pakistan)

Breakdown by Specialised Sector

Building and Engineering Contractors	29%
Plant Equipment Hirers	12%
Specialist Sub Contractors	21%
Mining and Civil Engineering	10%
Dealers and Distributors	28%



ONLINE

Over 9,000 persons receive the latest issue of Construction Plant World via email.

In addition to this, visitors to our website read the latest issue whilst buying and selling machines and parts.

We also send out targeted advertising ('E-Shots') to our online readership.

CONSTRUCTION **PLANT WORLD**



ADVERTISING

PRINT ADVERTISING

DOUBLE PAGE SPREAD (DPS)

Size: 277mm wide x 190mm high
Cost: £275.00

FULL PAGE

Size: 123mm wide x 190mm high
Cost: £185.00

HALF PAGE HORIZONTAL

Size: 123mm wide x 93mm high
Cost: £125.00

HALF PAGE VERTICAL

Size: 59mm wide x 190mm high
Cost: £125.00

QUARTER PAGE

Size: 59mm wide x 93mm high
Cost: £85.00

EIGHTH PAGE

Size: 59mm wide x 42mm high
Cost: £50.00

Also Available: Front and Back Covers

ONLINE ADVERTISING

LEADERBOARD

Size: 728 pixels wide x 90 pixels high
Cost: £300.00 per month

HALF PAGE

Size: 300 pixels wide x 600 pixels high
Cost: £250.00 per month

MEDIUM RECTANGLE

Size: 300 pixels wide x 250 pixels high
Cost: £200.00 per month

BUTTON

Size: 300 pixels wide x 164 pixels high
Cost: £180.00 per month

**File formats accepted: Animated Gif,
Jpeg, PNG, Tiff, Psd**

Also Available: 'E-Shots' (direct marketing to our subscriber database of over 9,000 individuals involved in the construction industry)

Please contact Lorraine for advertising bookings
Email: Info@constructionplantworld.com Tel: +44 (0)208 504 1661